



COM+ MANAGER

Contents

Copyright Notice	2
-------------------------	----------

Introduction	1
---------------------	----------

Overview	2
How does the Program Work?	2
License Agreement	3
Limited Warranty.....	4

Prerequisites	5
----------------------	----------

Host System Requirements	6
Increasing Registry Size Windows 2000	7
Port Requirements	7
Limitations	8

Setting up COM+ Manager	9
--------------------------------	----------

Installing COM+ Manager	9
-------------------------------	---

Next Steps	13
-------------------	-----------

Index	14
--------------	-----------

Copyright Notice

Copyright © 2003-2010 Lieberman Software Corporation.
All rights reserved.

The software contains proprietary information of Lieberman Software Corporation; it is provided under a license agreement containing restrictions on use and disclosure and is also protected by copyright law. Reverse engineering of the software is prohibited.

Due to continued product development this information may change without notice. The information and intellectual property contained herein is confidential between Lieberman Software and the client and remains the exclusive property of Lieberman Software. If there are any problems in the documentation, please report them to Lieberman Software in writing. Lieberman Software does not warrant that this document is error-free.

No part of this publication may be reproduced, stored in a retrieval system, or transmitted in any form or by any means, electronic, mechanical, photocopying, recording or otherwise without the prior written permission of Lieberman Software.

Microsoft, Windows, Word, Office, SQL Server, SQL Express, Access, MSDE, and MS-DOS are either registered trademarks or trademarks of Microsoft Corporation in the United States and/or other countries.



Lieberman Software Corporation
1900 Avenue of the Stars
Suite 425
Los Angeles
CA 90067
310.550.8575
Internet E-Mail: support@liebsoft.com
Website: <http://www.liebsoft.com>

Introduction

Welcome to the *COM+ Manager* Installation Guide. This guide is designed to help you accomplish basic operations in *COM+ Manager*.

COM+ Manager is a tool that is designed to help you manage COM, DCOM, MTS, and COM+ objects and applications on all your systems across Windows networks. *COM+ Manager* works on Windows NT 4.0, Windows 2000, and Windows XP. Through an easy interface, you are able to manage as many systems as you want using this tool. *COM+ Manager* also has features that allow you to:

- 1) Change the accounts that COM objects use to run on all your machines.
- 2) Manage deferred processes, meaning that you are able to retry tasks automatically as well as schedule changes to take place at a later time.
- 3) Supply additional administrative credentials to manage systems. This means that you can manage multiple groups of machines, even if those groups require different administrative logon rights to do so normally.
- 4) Log all your actions and the actions of the program to a text file.
- 5) Create reports about system groups, system lists, and COM/MTS/DCOM/COM+ objects and apps on all your systems. These reports can be in the form of text, spread-sheets, html pages, or printed pages.

Many other features are also included, for a complete list of features and their functionality, please refer to the *COM+ Manager* Admin Guide.

In This Chapter

Overview	2
How does the Program Work?	2
License Agreement.....	3
Limited Warranty	4

Overview

Thank you for purchasing *COM+ Manager* (CPM). If you are evaluating the product, we think you will be very pleased with its capabilities.

COM+ Manager allows management of COM/COM+ and MTS/DCOM applications on your managed systems. You can use this program to see what COM/COM+ and MTS/DCOM applications are present on your systems as well as settings for those components. COM+ Manager also allows changing the identity that the COM/COM+ and MTS/DCOM applications run as on all managed systems in just a few clicks, making account changes easy and efficient.

How does the Program Work?

This program uses the COM+ components and tools built into Microsoft Windows to pull information about COM+ applications from managed systems. Using these same tools, it is possible make changes to those COM+ applications allowing the objects to run as a specified identity or as a part of the system. The program also allows access to the built in configuration tools Windows offers for local COM+ applications and extends that functionality over the network.

License Agreement

This is a legal and binding contract between you, the end user, and Lieberman Software. By using this software, you agree to be bound by the terms of this agreement. If you do not agree to the terms of this agreement, you should return the software and documentation as well as all accompanying items promptly for a refund.

1. **Your Rights:** Lieberman Software hereby grants you the right to use a single copy of the *COM+ Manager (COM+ Manager)* to manage the licensed number of systems. This software is licensed for operation on only one machine unless other license arrangements have been made in writing between Lieberman Software and your organization.
2. **Copyright.** The SOFTWARE is owned by Lieberman Software and is protected by United States copyright law and international treaty provisions. Therefore, you must treat the software like any other copyrighted material (e.g. a book or musical recording) except that you may either (a) make one copy of the SOFTWARE solely for backup and archival purposes, or (b) transfer the SOFTWARE to a single hard disk provided you keep the original solely for backup and archival purposes. The manual is a copyrighted work also--you may not make copies of the manual for any purpose other than the use of the software.
3. **Other Restrictions:** You may not rent, lease, or transfer the SOFTWARE to any other entity. You may not reverse engineer, de-compile, or disassemble the SOFTWARE that is provided solely as executable programs (EXE files). If the SOFTWARE is an update, any transfer must include the update and all prior versions.
4. **Notice:** This software contains functionality designed to periodically notify Lieberman Software of demo usage and of the detection of suspected pirated license keys. By using this software, you consent to allow the software to send information to Lieberman Software under these circumstances, and you agree to not hold Lieberman Software responsible for the use of any or all of the information by Lieberman Software or any third party.

Limited Warranty

The media (optional) and manual that make up this software are warranted by Lieberman Software Corporation to be free of defects in materials and workmanship for a period of 30-days from the date of your purchase. If you notify us within the warranty period of such defects in material and workmanship, we will replace the defective manual or media.

The sole remedy for breach of this warranty is limited to replacement of defective materials and/or refund of purchase price and does not include any other kinds of damages.

Apart from the foregoing limited warranty, the software programs are provided "AS-IS", without warranty of any kind, either expressed or implied. The entire risk as to the performance of the programs is with the purchaser. Lieberman Software does not warrant that the operation will be uninterrupted or error-free. Lieberman Software assumes no responsibility or liability of any kind for errors in the programs or documentation of/for consequences of any such errors.

This agreement is governed by the laws of the State of California.

Should you have any questions concerning this Agreement, or if you wish to contact Lieberman Software, please write:

Lieberman Software Corporation
1900 Avenue of the Stars
Suite 425
Los Angeles
CA 90067

You can also keep up to date on the latest upgrades via our website at <http://www.liebssoft.com> or e-mail us at: sales@liebssoft.com.

Prerequisites

This section will provide basic instructions to get COM+ Manager installed and managing identities in the shortest amount of time.

In order to perform a successful installation, a few items will be required:

- Windows Server - workstation fine for testing
- Specific communication ports

Lieberman Software recommends using a domain administrator account for all management activities performed using this tool.

In This Chapter

Host System Requirements	6
Port Requirements	7
Limitations	8

Host System Requirements

A Windows Server or workstation operating system will be required for installation of COM+ Manager. The solution will work fine on a physical server or a virtual machine. All Service Pack levels and editions are supported except where specifically noted. Supported versions of Windows are:

- Windows 2000 Server with SP4
- Windows 2000 Professional with SP4*
- Windows XP Professional, 32bit version
- Windows XP Professional, 64bit version*
- Windows Server 2003, 32bit version
- Windows Server 2003, 64bit version*
- Windows Vista Business Edition or higher, 32bit version
- Windows Vista Business Edition or higher, 64bit version*
- Windows Server 2008, 32bit version
- Windows Server 2008, 64bit version*
- Windows 7 Professional or higher, 32bit version*
- Windows 7 Professional or higher, 64bit version*
- Windows Server 2008 R2, 32bit version
- Windows Server 2008 R2, 64bit version*

*This application is a 32bit application and will run in a WOW64 environment on a 64bit system.

Keeping in mind best practices regarding Windows hardware requirements, COM+ Manager will also require:

- 128MB of RAM
- Approx. 50MB of Hard Drive Space
- Intel Pentium III or AMD Athlon or better class processor

It is recommended to exceed these recommendations. The solution will make use of more RAM, typically 512MB of RAM for the application is recommended. 1GB+ of hard drive space for local log files is recommended. Intel or AMD multi-core or multi-proc/multi-core processors are recommended as the solution is heavily multi-threaded.

This manual does not cover installation of Windows.

IMPORTANT Before you install and use this program, you may need to increase the Windows registry size of your machine. This step applies to Windows Windows 2000 (Windows XP and above automatically manage the size of the registry). See the "Registry Size Requirements" Section for details on this requirement.

Increasing Registry Size Windows 2000

To increase the registry size on a Windows 2000 system:

- 1 Right click on the "*My Computer*" icon normally located in the upper left corner of your screen.
- 2 Select the "*Properties*" option on the menu.
- 3 Select the "*Advanced*" tab (far right tab) on the "*System Properties*" tabbed dialogue box.
- 4 Click on the "*Performance Options*" button.
- 5 For Windows XP, click on the tab page "*Advanced*".
- 6 Click on the "*Virtual Memory*" group "Change..." button.
- 7 Click on the "OK" button to save the new registry setting.
- 8 Click on "OK" button to close the "*Performance Options*" dialogue.
- 9 Click on "OK" button to close the "*System Properties*" dialogue.
- 10 If the system requires a reboot, click on the "OK" button to confirm the immediate reboot of the system.

Port Requirements

The following ports are used by *COM+ Manager*:

The following ports are the standard well known ports for the various protocols. These ports may have been changed on the target systems. It is the solution Administrator's responsibility to determine if any of the target ports have been changed and reflect that changed port when password change jobs or account discovery jobs are performed.

Port 25 - SMTP port for e-mail support.

Port 135 - Remote D/COM management port and secondary ports typically provided by granting access to DLLHOST.EXE in the %systemroot%\system32 directory.

Port 137, 138, 139 - NetBIOS Name Service Ports. This service handles file and folder sharing between Windows machines. These ports or 445 are required for this tool to properly function.

Port 389 - LDAP - if adding systems from a directory service

Port 636 - LDAPS - if adding systems from a directory service that uses SSL

Port 445 - Alternate NetBIOS Name Service port (Win2K, XP, 2003, Vista, 2008, 7 2008 R2). This port is not required unless the normal NetBIOS Name Service ports are closed (137, 138, 139). Be aware that this alternate port for the NetBIOS Name Service will not work on Windows NT 4.

Limitations

The COM APIs are only backwards compatible, thus a Windows system will only be able to manage COM+ on a like or down level system. For example, Windows 2000 could manage Windows NT and Windows 2000 but not XP or newer.

Windows Vista or later (NT 6.0+) cannot manage COM+/DCOM on Windows versions prior to Windows XP. This is a Microsoft imposed limitation.

In order for Windows NT4 systems to be managed by CPM, the NT4 option pack must be installed.

Setting up COM+ Manager

The following pages walk through the installation of COM+ Manager. For a thorough background on the usage of *COM+ Manager*, see the *COM+ Manager Admin Guide*.

In This Chapter

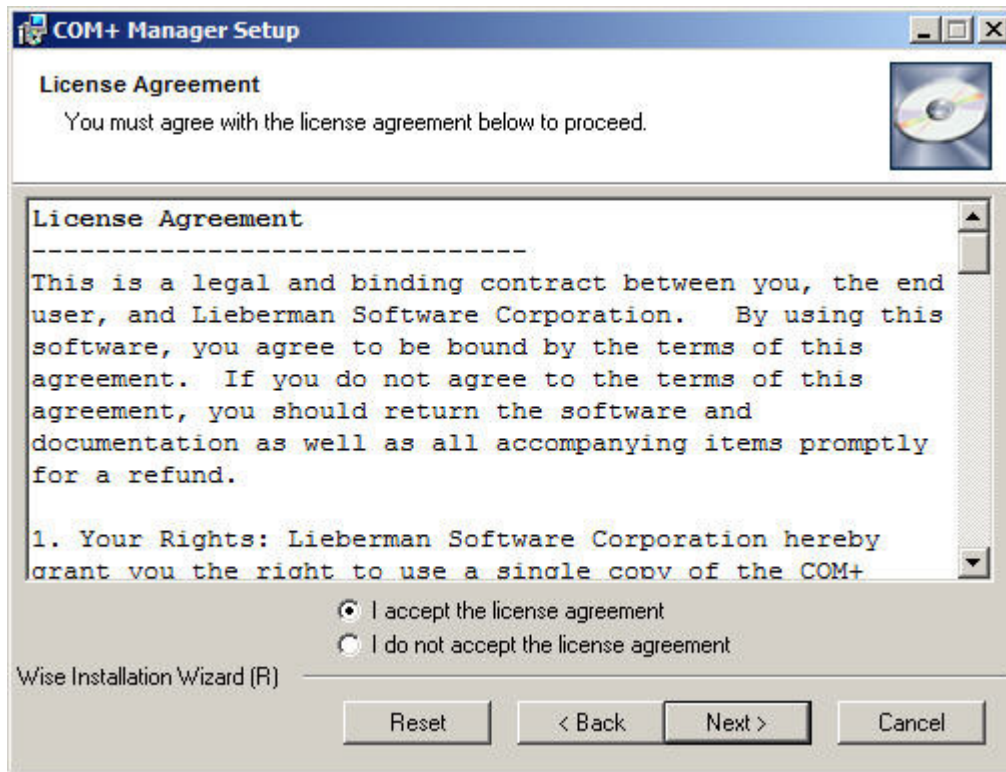
Installing COM+ Manager9

Installing COM+ Manager

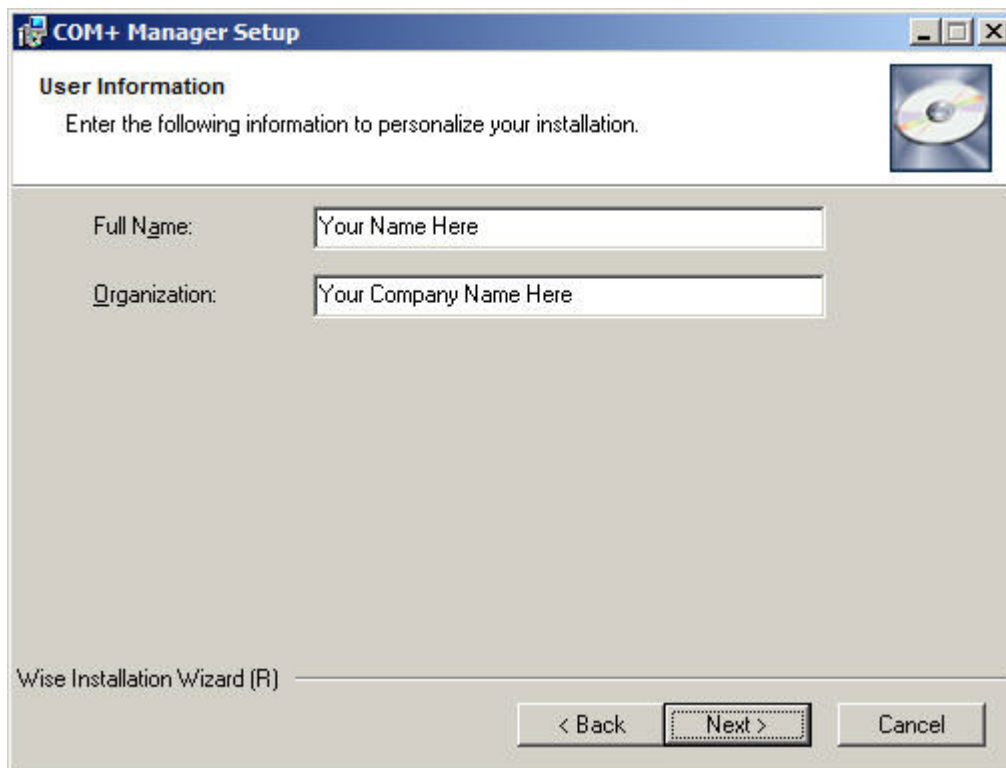
Launch the installer from the directory to which it was saved and follow the prompts to choose an installation directory.



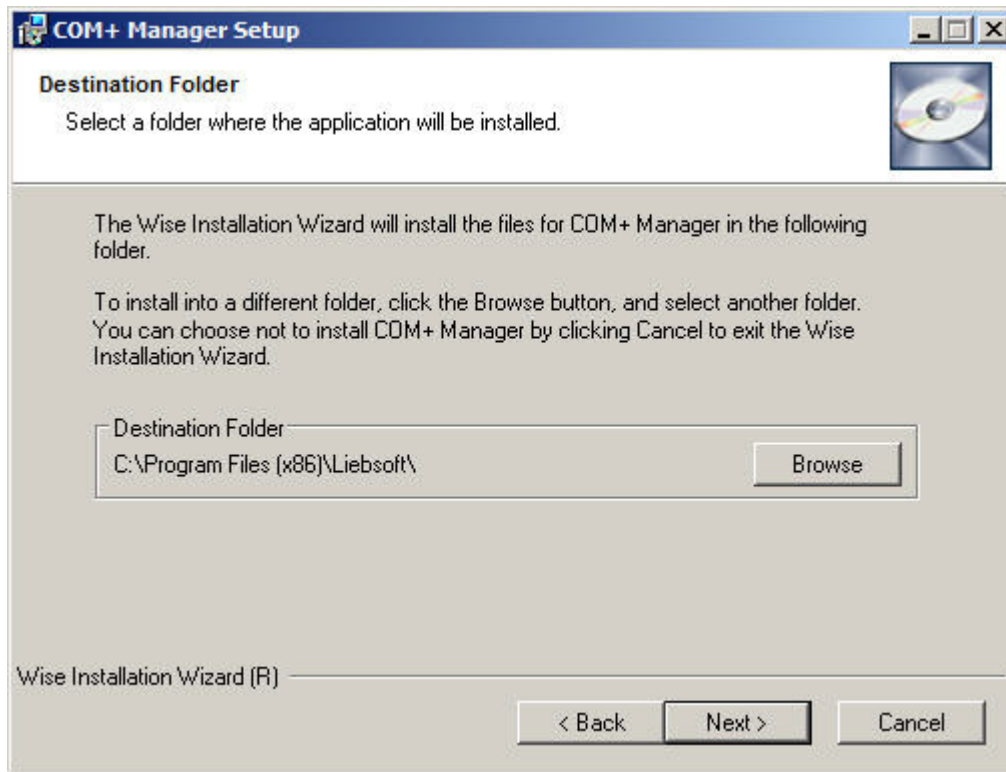
Click NEXT.



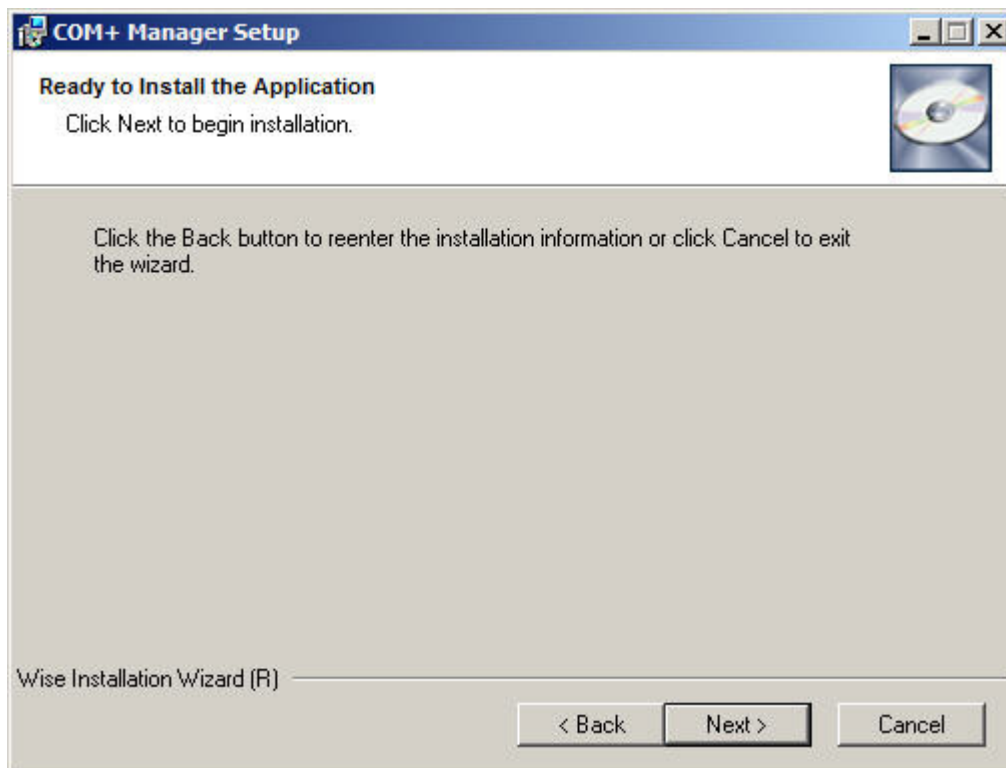
Read through the license agreement and click AGREE.



Enter in the registration information (optional) and click NEXT.



Choose the installation directory and click NEXT.



Click NEXT to start the installation. During the installation the program will create shortcuts on the start menu. All the required files and components needed to run the application and deferred processing service will be copied to the destination directory.



After the file copy is complete, click FINISH.

There will now be a shortcut to COM+ Manager on the start menu under [All] Programs.

Next Steps

Now that COM+ Manager has been successfully installed, the next step is to open the program and register it, then create lists of systems to manage. See the COM+ Manager Admin guide for information on how to use COM+ Manager.

Index

C

Copyright Notice • 2

H

Host System Requirements • 6

How does the Program Work? • 2

I

Increasing Registry Size Windows 2000 • 7

Installing COM+ Manager • 9

Introduction • 1

L

License Agreement • 3

Limitations • 8

Limited Warranty • 4

N

Next Steps • 13

O

Overview • 2

P

Port Requirements • 7

Prerequisites • 5

S

Setting up COM+ Manager • 9